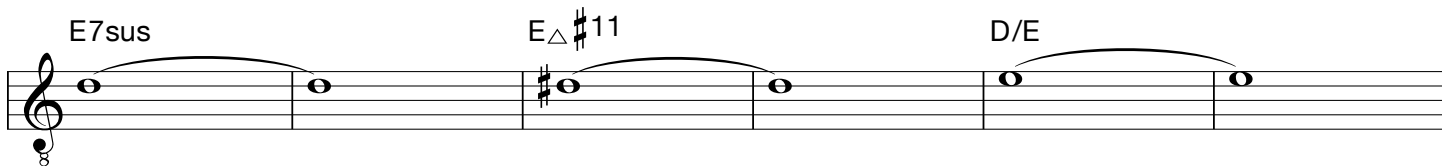
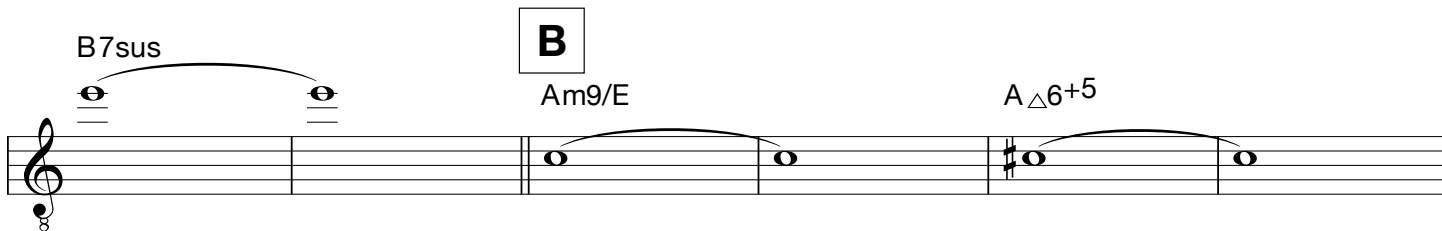
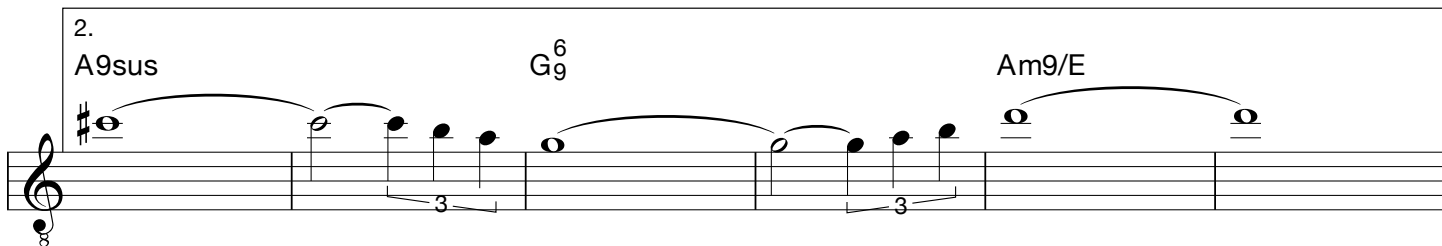
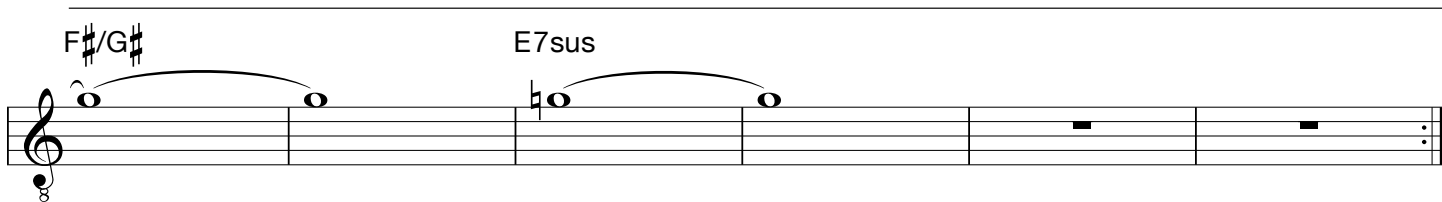
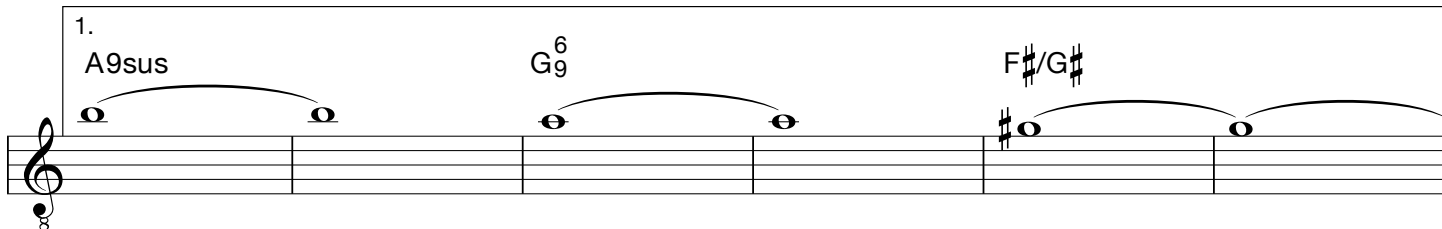
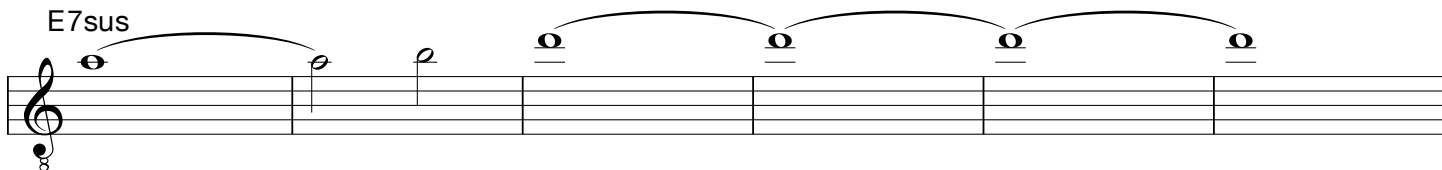
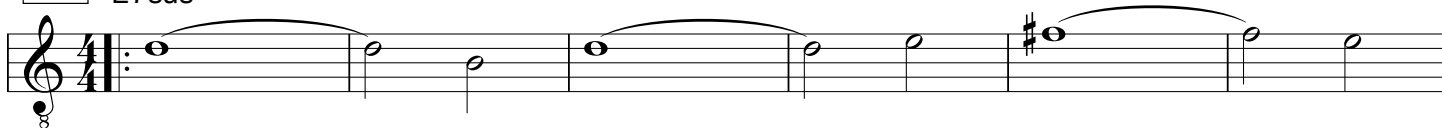


The Saloon Song

226

Peter Kienle

A Slow Rock Tempo
E7sus

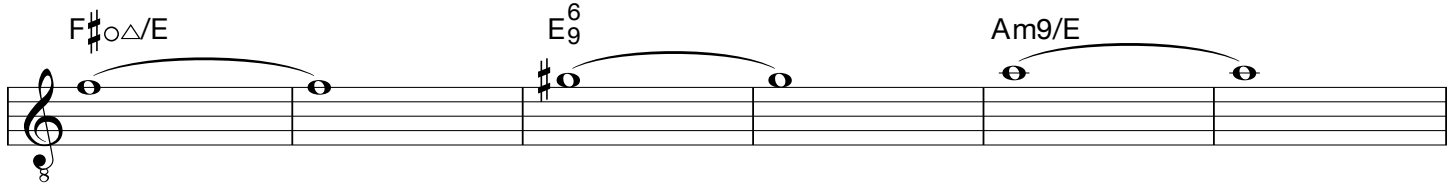


The Saloon Song (2)

F#^oΔ/E

E⁶₉

Am9/E

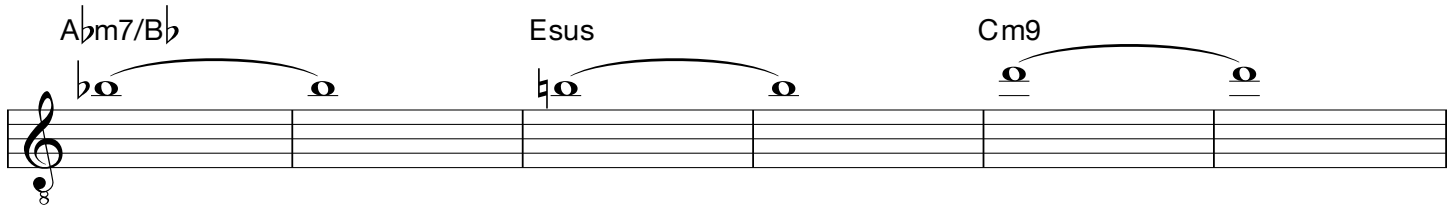


A musical staff in treble clef with a common time signature. It contains six measures. The first measure has a whole note F#4 with a slur over it. The second measure has a whole note G#4 with a slur over it. The third measure has a whole note A4 with a slur over it. The fourth measure has a whole note B4 with a slur over it. The fifth measure has a whole note C5 with a slur over it. The sixth measure has a whole note D5 with a slur over it. Chord symbols are placed above the notes: F#^oΔ/E above the first measure, E⁶₉ above the second measure, and Am9/E above the third measure.

A^bm7/B^b

Esus

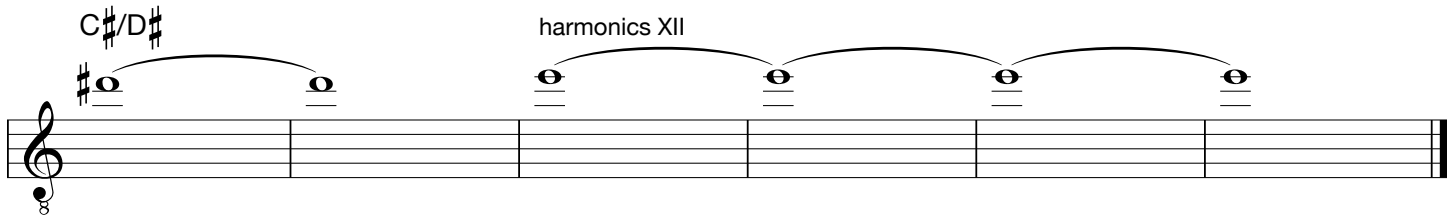
Cm9



A musical staff in treble clef with a common time signature. It contains six measures. The first measure has a whole note F4 with a slur over it. The second measure has a whole note G4 with a slur over it. The third measure has a whole note A4 with a slur over it. The fourth measure has a whole note B4 with a slur over it. The fifth measure has a whole note C5 with a slur over it. The sixth measure has a whole note D5 with a slur over it. Chord symbols are placed above the notes: A^bm7/B^b above the first measure, Esus above the second measure, and Cm9 above the third measure.

C#/D#

harmonics XII



A musical staff in treble clef with a common time signature. It contains six measures. The first measure has a whole note F4 with a slur over it. The second measure has a whole note G4 with a slur over it. The third measure has a whole note A4 with a slur over it. The fourth measure has a whole note B4 with a slur over it. The fifth measure has a whole note C5 with a slur over it. The sixth measure has a whole note D5 with a slur over it. Chord symbols are placed above the notes: C#/D# above the first measure, and harmonics XII above the second measure.